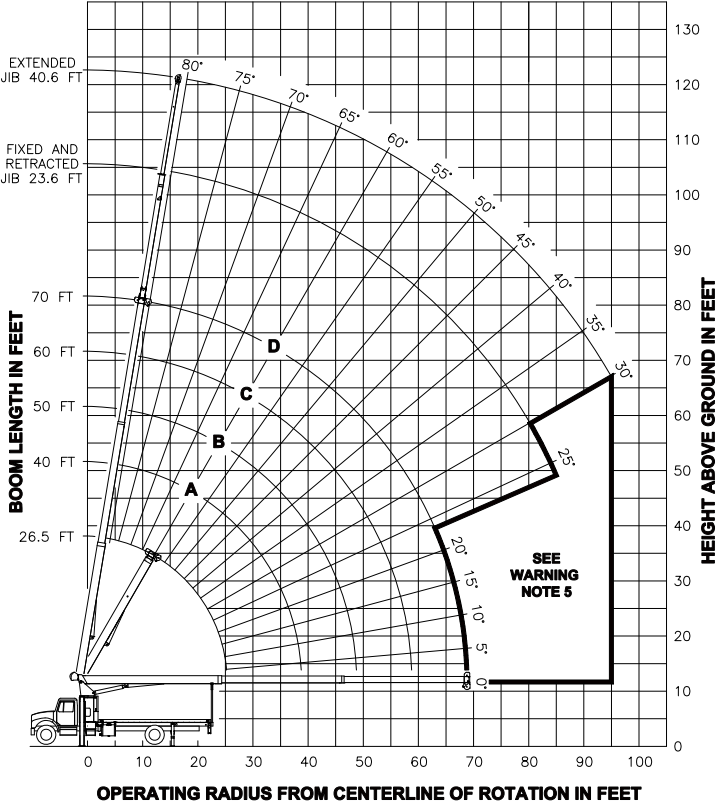


**RANGE DIAGRAM**



**LOAD RATINGS IN LBS WITH OUTRIGGERS AND STABILIZERS EXTENDED**

CRANE CONFIGURATION	LMI CODE #1				
	LOADED BOOM ANGLE				
	26.5 FT	40 FT	50 FT	60 FT	70 FT
5	79	38000			
8	73	27010	79	24000	
10	68	22330	76	21100	80
12	63	18410	73	18230	77
15	55	14420	69	14600	74
20	40	10350	61	10540	68
25	12	7830	52	8070	61
30			41	6400	54
35			28	5160	47
40				37	4200
45				25	3360
50					35
55					24
60					33
65					23
70					45
75					40
80					34
85					27
90					
95					
0	6650	0	3820	0	2700
				0	1960
					0
					1370
	350 LBS	240 LBS	190 LBS	160 LBS	140 LBS
	530 LBS	350 LBS	280 LBS	240 LBS	200 LBS

**JIB LOAD RATINGS IN LBS WITH OUTRIGGERS AND STABILIZERS EXTENDED**

OPERATING RADIUS	FIXED JIB		TELESCOPIC JIB	
	LMI CODE #2	LMI CODE #3	LMI CODE #4	LMI CODE #4
	BOOM LENGTH FOR ALL BOOM LENGTHS	BOOM LENGTH FOR ALL BOOM LENGTHS	BOOM LENGTH FOR ALL BOOM LENGTHS	BOOM LENGTH FOR ALL BOOM LENGTHS
23.6 FT	23.6 FT	23.6 FT	40.6 FT	
20	80	4400	80	4200
15	78	4200	78	4000
10	75	4000	75	3800
5	71	3600	71	3380
0	68	3220	68	3010
	65	2880	65	2650
	61	2580	61	2340
	57	2310	57	2060
	53	2020	53	1790
	49	1690	49	1460
	45	1410	45	1180
	40	1180	40	950
	34	980	34	750
	27	810	27	570
				39
				700
				34
				560
	DEDUCTIONS FOR STOWED FIXED JIB			
	DEDUCTIONS FOR STOWED TELESCOPIC JIB			

**WARNING**

- THE OPERATOR MUST READ AND UNDERSTAND THE OWNER'S MANUAL BEFORE OPERATING THIS CRANE.
- POSITIONING OR OPERATION OF CRANE BEYOND AREAS SHOWN ON THIS CHART IS NOT INTENDED OR APPROVED EXCEPT WHERE SPECIFIED IN OWNER'S MANUAL.
- LOADED BOOM ANGLES AT SPECIFIED BOOM LENGTHS GIVE ONLY AN APPROXIMATION OF THE OPERATING RADIUS. THE BOOM ANGLE BEFORE LOADING SHOULD BE GREATER TO ACCOUNT FOR DEFLECTIONS. DO NOT EXCEED THE OPERATING RADIUS FOR RATED LOADS.
- THE OPERATING RADIUS SHOWN IN THE JIB RATING CHART IS FOR FULLY EXTENDED BOOM ONLY. WHEN BOOM IS NOT FULLY EXTENDED, USE ONLY LOADED BOOM ANGLE TO DETERMINE LOAD RATING OF JIB.
- BOOM MUST BE FULLY RETRACTED WHEN JIB IS ERRECTED, BEFORE LOWERING BOOM THROUGH THIS AREA.
- FOR BOOM ANGLES NOT SHOWN ON JIB LOAD RATING CHART, USE RATING OF NEXT LOWER BOOM ANGLE.
- FOR BOOM LENGTHS NOT SHOWN, USE RATING OF NEXT LONGER BOOM LENGTH. FOR RADII NOT SHOWN, USE RATING OF NEXT LONGER RADIUS.
- CRANE LOAD RATINGS ON OUTRIGGERS ARE BASED ON FREELY SUSPENDED LOADS WITH THE MACHINE LEVELLED AND STANDING ON A FIRM UNIFORM SUPPORTING SURFACE. NO ATTEMPT SHALL BE MADE TO MOVE A LOAD HORIZONTALLY ON THE GROUND IN ANY DIRECTION.
- PRACTICAL WORKING LOADS DEPEND ON SUPPORTING SURFACE, WIND, AND OTHER FACTORS AFFECTING STABILITY SUCH AS HAZARDOUS SURROUNDINGS, EXPERIENCE OF PERSONNEL, AND PROPER HANDLING, ALL OF WHICH MUST BE TAKEN INTO ACCOUNT BY THE OPERATOR.
- THE MAXIMUM LOAD WHICH MAY BE TELESCOPED IS LIMITED BY HYDRAULIC PRESSURE, BOOM ANGLE, AND BOOM LUBRICATION. IT IS SAFE TO ATTEMPT TO TELESCOPE ANY LOAD WITHIN THE LIMITS OF THE LOAD RATING CHART. BOOM MUST BE FULLY RETRACTED AGAINST BOOM STOPS AT ALL TIMES WHEN LIFTING MINIMUM BOOM LENGTH CAPACITY LOADS.

**INFORMATION**

- DEDUCTIONS MUST BE MADE FROM RATED LOADS FOR STOWED JIB, OPTIONAL ATTACHMENTS, HOOKS, AND LOADBLOCKS (SEE DEDUCTION CHART). WEIGHTS OF SLINGS AND ALL OTHER LOAD HANDLING DEVICES SHALL BE CONSIDERED A PART OF THE LOAD.
- CRANE LOAD RATINGS WITH OUTRIGGERS ARE BASED ON OUTRIGGERS AND STABILIZERS EXTENDED AND SET WITH MACHINE LEVELLED.
- LOAD RATINGS ABOVE THE HEAVY LINE ARE STRUCTURALLY LIMITED CAPACITIES. LOAD RATINGS BELOW THE HEAVY LINE ARE STABILITY LIMITED CAPACITIES AND DO NOT EXCEED 85% OF TIPPING.

**DEFINITIONS**

- OPERATING RADIUS IS THE HORIZONTAL DISTANCE FROM THE AXIS OF ROTATION TO THE CENTER OF THE VERTICAL HOIST LINE OR TACKLE WITH LOAD APPLIED.
- LOADED BOOM ANGLE AS SHOWN IN THE COLUMN HEADED BY  $\alpha$ , IS THE INCLUDED ANGLE BETWEEN THE HORIZONTAL AND LONGITUDINAL AXES OF THE BOOM BASE AFTER LIFTING RATED LOAD AT RATED RADIUS.

**LMI OPERATING CODES**

SETTING	CRANE CONFIGURATION	SETTING	CRANE WITH PERSONNEL LIFTING PLATFORM
#1	--- MAIN BOOM	#5	--- PERSONNEL LIFTING PLATFORM ON MAIN BOOM
#2	--- FIXED JIB	#6	--- PERSONNEL LIFTING PLATFORM ON FIXED JIB
#3	--- TELE JIB - RETRACTED	#7	--- PERSONNEL LIFTING PLATFORM ON TELE JIB - RETRACTED
#4	--- TELE JIB - EXTENDED	#7	--- PERSONNEL LIFTING PLATFORM ON TELE JIB - EXTENDED

**WARNING: LIFTING PERSONNEL FROM EXTENDED JIB IS NOT APPROVED**

**ALLOWABLE LINE PULL**

1 PART LINE	2 PART LINE	3 PART LINE	4 PART LINE	5 PART LINE
8500 LBS	17000 LBS	25500 LBS	34000 LBS	38000 LBS
7700 LBS	15400 LBS	23100 LBS	30800 LBS	38000 LBS

**WARNING**

ANTI-TWO-BLOCK SYSTEM MUST BE IN GOOD OPERATING CONDITION BEFORE OPERATING CRANE. REFER TO OWNER'S MANUAL.

KEEP AT LEAST 3 WRAPS OF LOAD LINE ON DRUM AT ALL TIMES.

9/16" - 6X25 IWRC (3.5:1 S.F.) 29750 LBS. BREAKING STRENGTH  
9/16" ROT RESISTANT (5.0:1 S.F.) 38800 LBS. BREAKING STRENGTH

**DEDUCTIONS FROM RATED LOADS FOR LOAD HANDLING DEVICES SUPPLIED BY MANITEX**

OVERHAUL BALL	---	SEE OVERHAUL BALL MFRGR. NAMEPLATE
LOAD BLOCKS	---	SEE BLOCK MFRGR. NAMEPLATE
HOSE REEL	---	160 LBS
SWING AROUND JIB	---	SEE LOAD CHART

**WARNING**

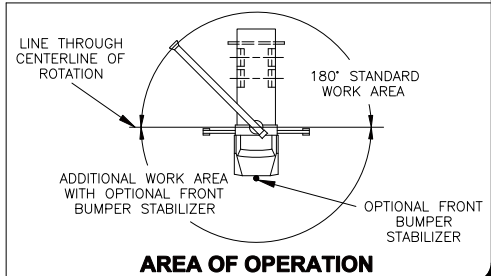
LIFTING OFF THE MAIN BOOM POINT WHILE THE JIB IS ERRECTED IS NOT INTENDED OR APPROVED.



**MODELS 1970C & 1970T**

CRANE MEETS ANSI B30.5 REQUIREMENTS

7300086-009 A



**AREA OF OPERATION**